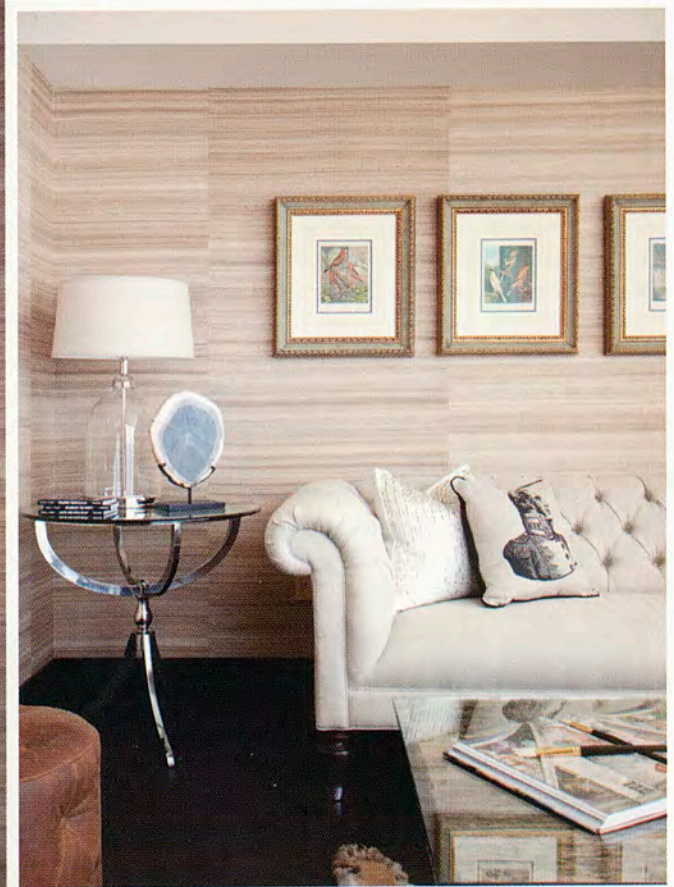






# FOREIGN EXCHANGE



**Left** A sofa, upholstered in dark gray linen, balances two oak-framed chairs in the living room. **Above** The neutral color scheme continues throughout the home.

## *RS3's small space makeover makes a grand statement*

By **Jana Soeldner Danger**  
Photography by Mike Butler



hat began as a simple search for some window treatments grew into a complete condominium redesign and a trip to Istanbul.

Interior designers Shannon Scott and Raymond Jimenez were employed at the same firm in Miami when they realized that they worked so well together, they would probably be successful as partners. "We had both established what we're good at, and our talents complemented each other," Scott says.

Deciding to strike out on their own, they established a new company they called RS3 Innovative + Architectural Design. "The 'R' and 'S' are the first letters of each of our names," Jimenez says. "The '3' is for the client, who is always an important part of every project."

When a vendor from Design Center of the Americas in Dania Beach referred them to a client from Turkey who wanted new draperies for his condominium in Murano at Portofino on South Beach, there was instant rapport. So much so, in fact, that it wasn't long before the gentleman offered to let them transform his condo's dated décor into something fresh and wonderful. "We ended up gutting the entire place," Scott says. "He wanted a combination of traditional and contemporary, and because there's a water view with cruise ships and yachts going by, he also wanted the feeling of a boat."

## AN ECLECTIC DESIGN PLAN

A color palette of beige, gray and champagne creates a neutral backdrop for other design elements in the two-bedroom, two-and-a-half bath, 1,400-square-foot condominium. Golden teak doors throughout help bring in a yachting theme. And to marry the seeming conflict of traditional and contemporary, the designers combined graceful curves with sleek, straight lines, and natural dark woods and elegant fabrics with modern elements of metal, glass and acrylic.

For the living and dining rooms as well as the study, they used pure silk wall covering in a soft mix of beige and gray.

“The client loves the feel and glisten of silk, and this was the first thing we chose for the home,” Scott says. “It has a slightly woven texture, and the light color makes the darker tones of the furnishings stand out.”

The original travertine marble flooring remained, but the designers honed its high gloss to a matte finish with the look of raw stone. A gray area rug made of silk and wool, embossed with a circle pattern that complements other curves in the room, adds warmth and defines the seating area. The straight-line, floor-to-ceiling draperies, a blend of silk and linen with a slight sheen, rise to a simple



**Left** An ornate crystal chandelier is a focal point in the dining room.

**Above** Dark cherry wood flooring in the study contrasts with honed travertine in living and dining rooms.



drywall top treatment. “We wanted a clean look because there were so many other things going on in the room,” Scott says.

Attached to one wall is a large flat-screen TV, and underneath is a curved, beige-and-gray-lacquered credenza that holds wires and other electronic paraphernalia. A sofa upholstered in dark, solid gray linen balances two oak-framed chairs with soft curves, brass-studded crushed gray velvet fronts and beige linen backs. Champagne-toned pillows with ornate gray designs accent both sofa and chairs. Adding a modern element to the room is a table with an acrylic base and an inlaid glass top. “The materials are contemporary, but the shape is traditional,” Scott says.

An ornate crystal chandelier imported from Italy is a focal point in the dining room, where the acrylic base of the round, glass-topped table has a shape similar to a giant chess pawn. Chairs have traditional wood legs and curved backs upholstered in crushed gray velvet accented with brass nail heads. The reflection from two mirrored credenzas butted against each other makes the space look larger.

Because the client had no real need for a guest room, the

designers turned the second bedroom into a study. After tearing out the existing carpet, they installed dark, hand-scraped cherry wood flooring to build traditional ambience and contrast with the honed travertine in adjacent rooms. Shimmering champagne-colored silk draperies frame the window, while sheers offer privacy and filter sunlight. As in the living room, the top treatment is a simple drywall soffit.

A traditional tufted sofa covered in champagne-colored linen has graceful rolled arms, and wingback chairs with wood legs and beige linen upholstery accented with silver studs are also distinctly traditional. Small pillows with whimsical designs and silver beading, however, add a modern touch. The cocktail table has contemporary chrome legs, and a top made from reclaimed railroad ties finished with glass.

Also blending the mix of styles are the side tables. One is made of traditional dark cherry wood. The other has a curved, shiny chrome base and a glass top. Two ottomans covered in espresso-colored suede offer extra seating, and on the floor is an authentic fur rug. Displayed on the walls are antique bird prints custom-framed in olive green and gold.

### ONYX CREATES KITCHEN DRAMA

In the kitchen, golden teak clads both appliances and cabinets, adding to the home's yachting ambience. Dramatic, smoke-patterned solid slabs of volcanic onyx top both the counter and the breakfast bar, which is faced with the same gray silk wall covering found in the study and living and dining rooms. An under-mount sink keeps the top line of the breakfast bar smooth and clean, and an artistic chrome faucet that can fold or extend adds whimsy. Stool cushions are covered in silver-gray fabric.

Lighting in the kitchen comes from several sources. The primary fixture, small crystal pendants encircled by a champagne-colored fabric shade, hangs in the center of the ceiling. Larger chrome pendants housing Swarovski crystals are suspended over the breakfast bar. Recessed lighting in the dropped ceiling between kitchen and dining room brightens that space, and in the base of the breakfast bar, flush-mounted LED lights shine against the acrylic legs of the stools, causing them to glow.

### THE MASTER SUITE

"The client told us he wanted his bedroom to really stand out," Scott says. "So we began with a different wall covering than in the other rooms. We also made it extremely traditional."

Instead of gray and beige silk, bedroom walls are covered in wood veneer that has a silver and bronze sheen with a teal cast. "It changes with the light," Scott says.

To create some continuity, however, shimmering, champagne-colored silk draperies framing sheers, similar to those in the study, hang at the windows, and the flooring is the same hand-scraped



**Left** Calcutta marble adds elegance to the master bath.

**Above** A traditional four-poster is the centerpiece of the master bedroom.



cherry wood. The dark walnut bed has four slender posts intricately carved with a pineapple motif, and a headboard upholstered in tufted silvery teal silk framed in walnut. On the floor is an ornately patterned area rug in a hue similar to that of the silk on the headboard. “The bed is such dark wood, we used the rug to make it really pop,” Jimenez says.

The nightstand is a traditional walnut chest with bronze lions head pulls. A wingback chair offers an inviting spot to read, and a log of petrified wood serves as an unusual side table. High-hats in the existing soffit over the bed and strip fixtures above the window provide mood lighting. “They’re really the only modern elements in the room,” Scott says.

To create a show-stopping master bath, the designers began by facing an existing drywall perimeter soffit with

golden teak to contrast with the clean white center, and replacing existing travertine with elegantly patterned gray Calcutta marble on the walls and floor. A matching slab covers the side of the clean-lined rectangular tub that replaced an existing round one. The separate shower has a seamless glass door and a dramatic, 24-inch chrome handle.

A single slab of the marble covers the custom teak vanity, accommodating two under-mount sinks and then wrapping around the side. Sink hardware is crystal and chrome. “It’s very ornate and traditional to contrast with the straight lines of the vanity doors,” Scott says.

Twin mirrors are double-framed in wood with a satin finish that has the look of stainless steel. Mounted on both sides of each mirror are light fixtures with chrome bases and frosted glass flutes.



A teak table and six matching chairs on the balcony are perfect for alfresco dining.

### OUTDOOR LIVING SPACE

The long balcony spans both the bedroom and living room, and with its fabulous water view, it is an important part of the condo's living space. The designers began by honing the original travertine flooring as they did for interior rooms, and to provide privacy from the balcony next door, they added small screens made of teak strips. A teak chaise is perfect for relaxing, and a teak table and six matching chairs allow for elegant or casual alfresco dining. Chrome candle lanterns conjure the ambience of a ship, while white glass fixtures with the look of chess pieces inject a modern element.

Shortly before the designers presented the project to their client, he invited them to visit him in Istanbul. They accepted, and experienced the adventure of their lives. "It was phenomenal," Jimenez says.

But the real satisfaction came later, when the client actually saw their work. "He was so happy," Scott says. "It was wonderful to see." □

Family Owned and  
**PATIO SHOPPE**  
OF CORAL SPRINGS & NORTH PALM BEACH

Operated Since 1981

**APOLLO AWARD  
WINNER  
VOTED #1 IN  
AMERICA**

**We Export**

**We Ship Everywhere**

**Specializing In The Largest Selection Of Quality  
Name Brand Furniture With Low Prices.**

**800.287.4061    [www.patioshoppes.com](http://www.patioshoppes.com)**

*Casual Elegance For Your Outdoor Living Area*

7355 Sample Road Coral Springs  
**954.752.0161**  
*1.4 miles west of 441*

1201 U.S. Highway #1 North Palm Beach  
**561.776.9990**  
*½ mile south of PGA*

**Come See Us At Our 2 Beautiful 10,000 Sq ft. Showrooms \*Open 7 Days**